



WINCHESTER CITY

DOG TRAINING CLUB

KENNEL CLUB OBEDIENCE HEAT

EMBLEY SCHOOL, Nr ROMSEY, HANTS SO51 6ZE
Entrance off the A27 Romsey to Whiteparish Road.

**Look for two Embley School signs either side of the gateway. What 3 Words for show entrance;
///taster.durations.hairspray Do not turn into the adjacent road by the large sign.**

SUNDAY 14 JULY 2024

INFORMATION FOR COMPETITORS

**Judges Briefing for Team Managers will take place at the ring at 10:00
and judging will commence shortly after.**

The Judge will be using Heelwork Pattern C

Thank you for your entry to our KC Obedience Heat. We are obliged to comply with venue contractual requirements. So, we request that you read the information below and follow the procedures we have in place for the day.

Key Show Personnel

Show Manager, H&S Officer; David Moxon 07810 378737
Show Secretary; Sue Garner, emergency number for show day 07487 785359
Chief Steward; Lilian Turner

Petneeds will be at our show so please bring your purse and do what you can to support this longstanding obedience trade stand.

Catering. On site refreshments are available, no seating area, but full service is provided courtesy of George, our mobile caterer.

Competitors briefing

Please do NOT arrive BEFORE 07.30.

Please use the gate house entrance when arriving, which is the main entrance off the A27. Please stay in your car until you have been directed into the car park. It is a long driveway.

Parking, will be spaced out, as directed by the parking stewards. Arrive with friends if wish to park together. Tents must be erected at rear of vehicles. No awnings or gardens and no towed vehicles e.g. caravans or trailers. Campervans are fine.

Booking in is at your class and blank card will be available to write your own ring numbers

Venue - out of bounds areas will be clearly marked and must be respected. The schools' grounds are substantial, but we must stay within the area allocated. We are pleased to say we have a larger second exercise areas in front of the main house, see the ring plan on the day. The woods are out of bounds (sorry, school rules). You may also walk your dogs around the perimeter of the ring area but must pick up all dog mess.

The venue has a strict no alcohol and no smoking rule. Any one wishing to smoke must do so in the confines of their vehicle.

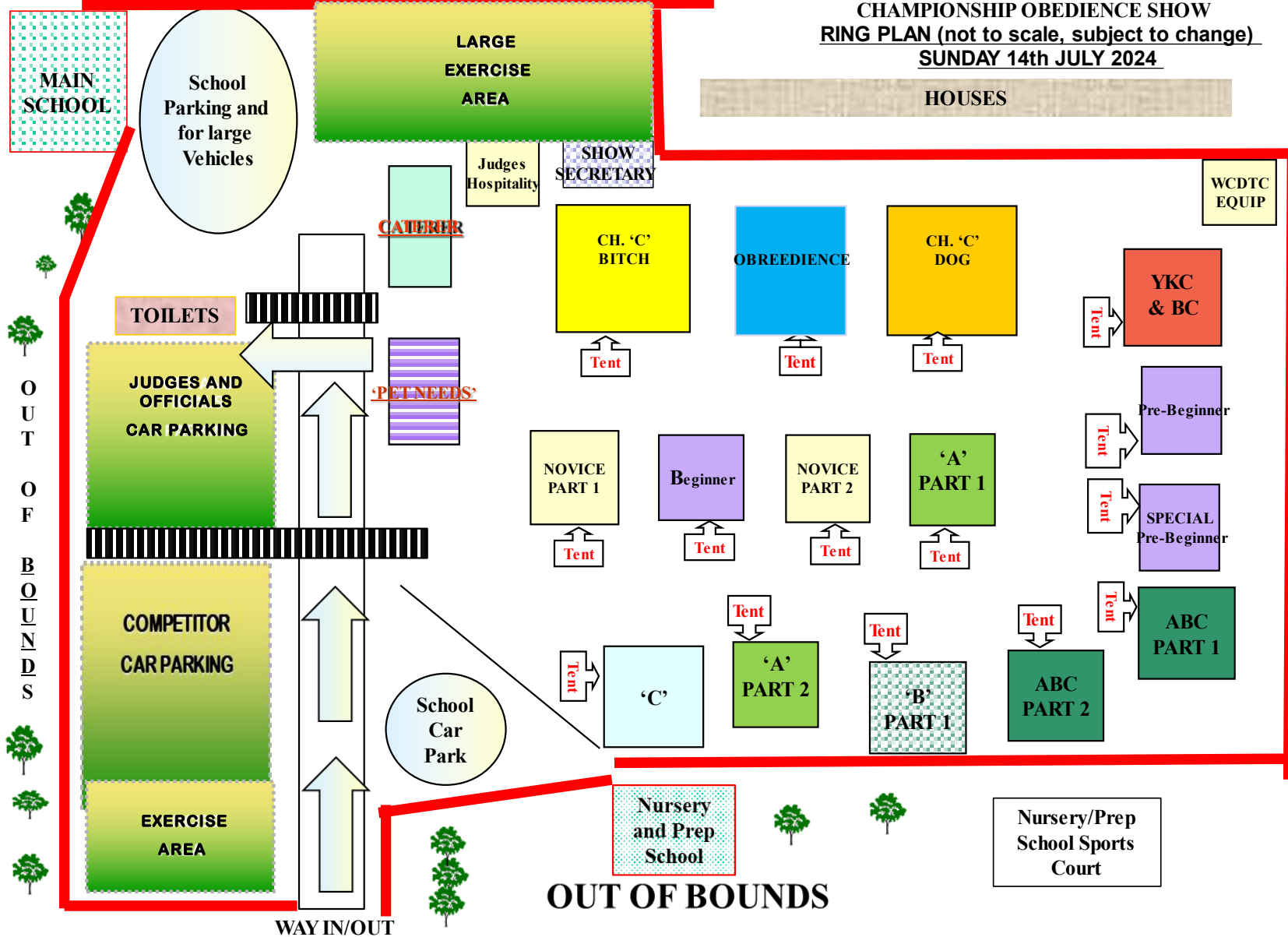
No BBQ's or naked flames.

Make sure you, pick up all dog mess and do not drop any litter etc. Please take all litter home with you. Designated bins will be provided for dog mess.

If you wish to give your dogs a free run either on your way in the morning or going home Canada Common is a few minutes way, and can be found just off the southern end of the A36 at Wellow.

GOLF COURSE IS OUT OF BOUNDS

WINCHESTER CITY DOG TRAINING CLUB
CHAMPIONSHIP OBEDIENCE SHOW
RING PLAN (not to scale, subject to change)
SUNDAY 14th JULY 2024

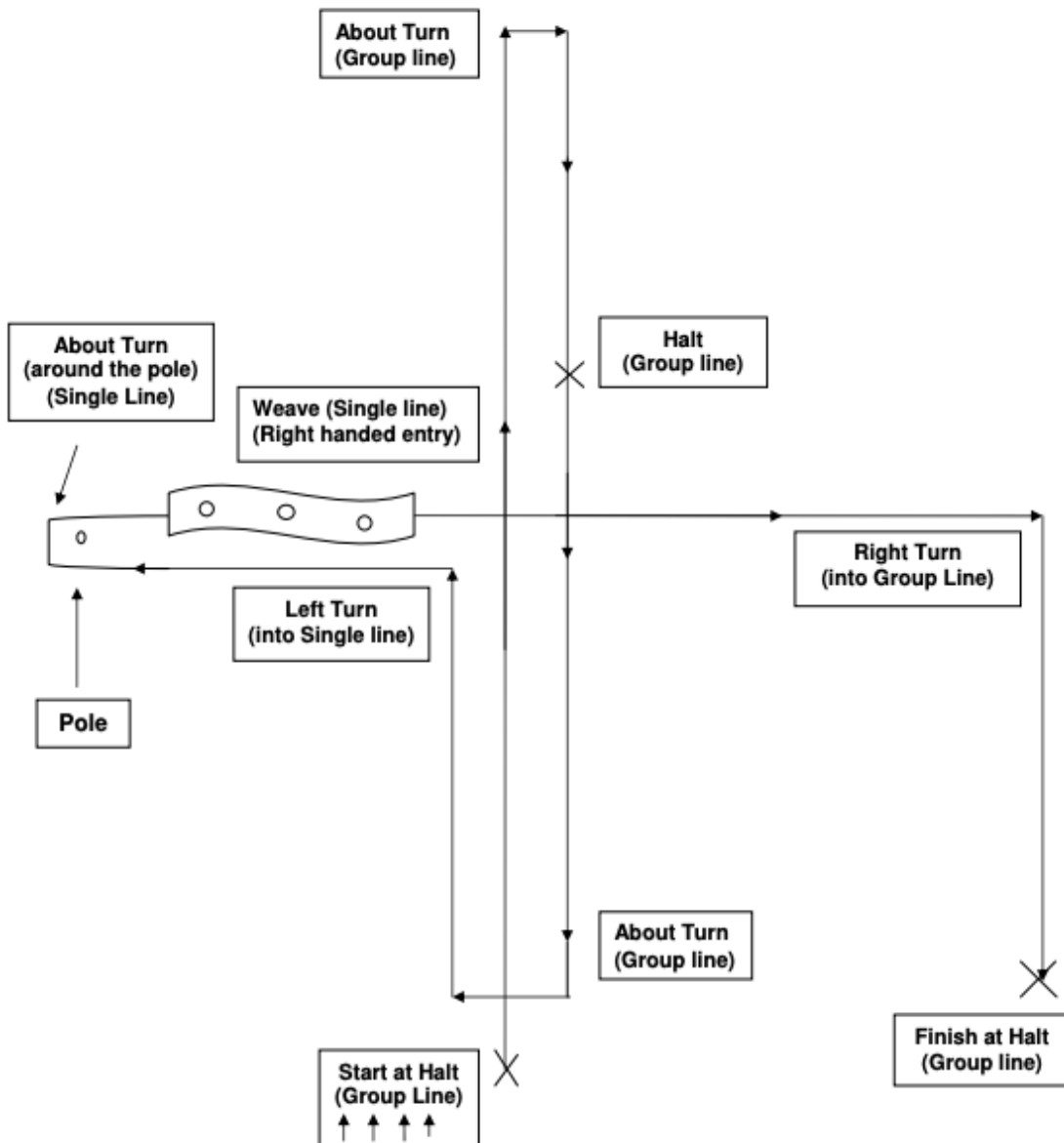


**Winchester City DTC
Obreedience**

Judge: Heidi Lawrence

- | | | |
|---|---------------------|---------------------|
| 1 | Stafford Stars | SBT |
| 2 | Cool Cockers | Cocker Spaniels |
| 3 | The Shetlanders | Shetland Sheepdogs |
| 4 | Spring It On | ESS |
| 5 | MRU | Manchester Terriers |
| 6 | Shelties Superstars | Shetland Sheepdogs |
| 7 | The Labrapaws | Labrador |
| 8 | Supernovas | NSDTR |
| 9 | Clumberjacks | Clumber Spaniels |

**OBREEDIENCE TEAM COMPETITION
HEELWORK PATTERN TEST C**



- Handlers Start and Finish at a Halt ▲ ▲ ▲ ▲
- Group line means handlers walk side by side (in unison) e.g.
- Single Line means handlers walk in single file. (following in line with equal spacing)
- Halt is required in unison.
- Commencement and Halt should be done at the same time by all team members.
- All Dogs are **ON** lead